

West Ave.

WEST "B" STREET

BASE BID LANDSCAPING

BASE BID SHALL CONSIST OF SEEDING ALL DISTURBED AREAS WITH COMMON BERMUDAGRASS, REFER TO SHEET C6.3.

LANDSCAPE NOTES (ALTERNATE #2)

- LOCATE ALL EXISTING UTILITIES PRIOR TO INSTALLATION OF PLANT MATERIAL. NOTIFY OWNER OF ANY DISCREPANCIES BETWEEN FIELD CONDITIONS AND THOSE SHOWN ON THE PLAN.
- VERIFICATION OF TOTAL QUANTITIES AS SHOWN ON THE PLANT LIST SHALL BE THE RESPONSIBILITY OF THE CONTRACTOR AND THE TOTAL QUANTITIES SHALL BE AS SHOWN ON THE PLAN.
- ALL PLANT MATERIAL SHALL CONFORM WITH THE STANDARDS SET FORTH BY THE AMERICAN ASSOCIATION OF NURSERYMEN AND THE WRITTEN SPECIFICATIONS.
- CONTACT THE LANDSCAPE ARCHITECT FOR INSPECTION AT THE FOLLOWING INTERVALS:
 - REVIEW OF GRADING PRIOR TO PLANT INSTALLATION.
 - REVIEW OF CONDITION OF AMENDED SOIL PRIOR TO PLANT INSTALLATION.
- PLANTING BEDS TO BE MULCHED WITH A MINIMUM OF 3" OF TRIPLE SHREDDED HARDWOOD MULCH. ALL PLANT GROUPINGS SHALL BE MULCHED AS ONE BED.
- ESTABLISH POSITIVE DRAINAGE IN ALL PLANTING BEDS AND AWAY FROM BUILDINGS.
- APPLY PRE-EMERGENT HERBICIDE TO ALL NEW PLANTING BEDS AT AT MANUFACTURER'S RECOMMENDED RATE PRIOR TO INSTALLATION OF MULCH.
- DO NOT INSTALL PLANT MATERIAL IN IMPERVIOUS SOILS, (i.e. HOLES WHICH, WHEN FILLED WITH WATER, DO NOT COMPLETELY DRAIN WITHIN TWO HOURS.)
- SOODED AREAS SHALL BE TIFTON 414 BERMUDAGRASS. LAWN AREAS SHALL BE SEEDING WITH COMMON BERMUDAGRASS.

PLANT LIST (ALTERNATE #2)

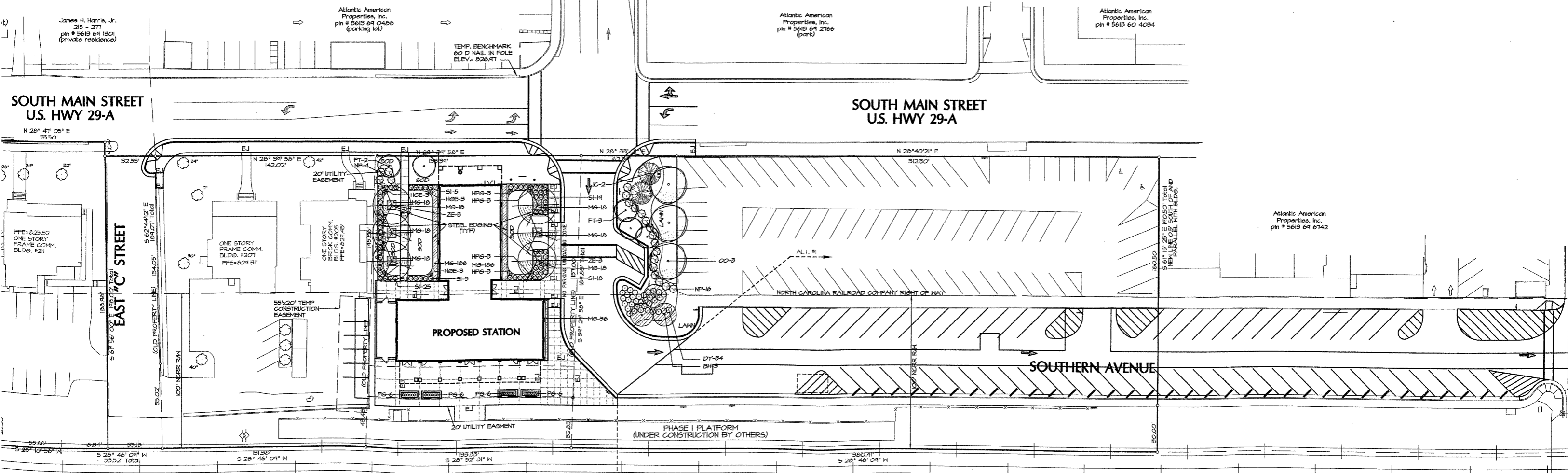
KEY	QTY	PLANT NAME	SIZE	REMARKS
DY	34	DWARF YAUPON HOLLY ILEX VOMITORIA 'NANA'	15"-18" SFR. CONT.	FULL PLANTS, SPACED 3'-1/2' O.C.
HGE	12	GREAT EXPECTATIONS HOSTA HOSTA 'GREAT EXPECTATIONS'	6AL. CONT. 1-2 EYES	FULL PLANTS HEAVY GRADE
HPG	12	PAUL'S GLORY HOSTA HOSTA 'PAUL'S GLORY'	6AL. CONT. 1-2 EYES	FULL PLANTS HEAVY GRADE
MB	480	MONDO GRASS OPHIPOSON JAPONICUS	QUARTS 5-7 BIBS	SPACED 15" O.C.
NP	20	NEEDLEPOINT HOLLY ILEX CORNUTA 'NEEDLEPOINT'	18"-24" HT. CONT.	FULL PLANTS, SPACED 4' O.C.
PG	24	PORCUPINE GRASS FENIGETUM ALOPECUROIDES 'HAMELN'	6AL. CONT.	FULL PLANTS 18" O.C.
SI	71	SHAMROCK INKBERRY ILEX GLABRA 'SHAMROCK'	15"-18" HT./SFR. CONT.	FULL PLANTS, SPACED 3' O.C.
BH	3	TREE-FORM BURFORD HOLLY ILEX CORNUTA 'BURFORDII'	6'-7" HT. B4B	3-TRUNK MIN, MATCHED SPECIMENS
FT	3	FRINGETREE CHIONANTHUS VIRGINICUS	6'-7" HT. B4B	3-TRUNK MIN, MATCHED SPECIMENS
JC	4	JAPANESE CRTIOMERIA CRTIOMERIA JAPONICA 'YOSHINO'	7'-8" HT. B4B	MATCHED
OC	3	OVERCUP OAK QUERCUS LYRATA	2-1/2"-3" GAL. 14-16"	STRAIGHT TRUNK, MATCHED SPECIMENS
ZE	6	GREEN VASE ZELKOVA ZELKOVA SERRATA 'GREEN VASE'	2-1/2"-3" GAL. 14-16"	STRAIGHT TRUNK, MATCHED SPECIMENS

NEL NOTE:

DR SHALL KEEP ALL CONSTRUCTION TRAFFIC OFF THE SIDEWALK THAT RUNS ON TOP OF THE TUNNEL UNTIL SUCH TIME THAT IT CAN BE EITHER AS A PART OF THIS CONTRACT OR BY ANY DAMAGE TO THE TUNNEL AS A RESULT OF ANY ACTIVITIES SHALL BE REPAIRED AT NO ADDITIONAL COST TO THE OWNER.

MAN NOTE:

SOUTHERN FLAGSMAN SHALL BE PROVIDED WITHIN 25' OF THE CENTERLINE OF THE TUNNEL TO SPECIFICATION SECTION 01020 FOR ADDITIONAL INFORMATION. COORDINATE SCHEDULE WITH SOUTHERN, OWNER AND ARCHITECT.



NORFOLK SOUTHERN RAILROAD

ALL WORK ALONG SOUTHERN AVENUE